



Since 1901 the Chicago Pneumatic name has represented reliability and attention to customer needs, with tools and compressors designed for specific industrial applications. Today, Chicago Pneumatic has a global reach, with local distributors around the world. Our people start every single day with a passion to research, develop, manufacture and deliver new products that are meant to meet your needs not only today, but tomorrow as well. To learn more, visit www.cp.com.

Gear Drive Rotary Screw Air Compressors 40-120 HP

Chicago Pneumatic: full offer, global presence



Chicago Pneumatic Compressors
Sveanagar, Mumbai Pune Highway, Dapodi,
Pune - 411012 Maharashtra, India.
Phone: + (91) 93 7191 9200 / 93 2417 4988



Design
Manufacture, Sales and
Service of air compressors,
Air dryers and air filters



ISO 9001 . ISO 14001
OHSAS 18001
Forms an integral part of each
business process of Chicago
Pneumatic Compressors

Dealer Network



Regional Customer Centers

West	Rushabh, II Floor, Near American Heart Institute, Ghodbunder Road, Thane (W) - 400601
	93241 74565 / 93256 36552 sales.west@cp.com / service.west@cp.com
North	Unitech Business Park, Tower - A, First Floor, Block - F, Sector - 41, South City-1, Gurgaon - 122001
	93124 06866 / 93124 17744 sales.north@cp.com, service.north@cp.com
East	Trinity Plaza, 2nd Floor, East Wing, 84/1A, Topsia Road, (South) Kolkata - 700 046
	93322 90559 / 93322 91224 sales.east@cp.com, service.east@cp.com
Central	4th Floor, Block A, Amsri Shamira Building, Old Lancer Lines, Secunderabad - 500 025
	88861 78825 / 93924 06641 sales.central@cp.com, service.central@cp.com
South	No. 1-A, Kushal Garden, Peenya Industrial Area, Peenya 2nd Phase, Bangalore - 560 058
	93677 87070 / 93421 44450 sales.south@cp.com, service.south@cp.com

- **Area offices:** Ahmedabad, Baroda, Chandigarh, Chennai, Pune
- **Resident offices:** Coimbatore, Erode, Kochi, Jaipur, Raipur, Vizag



Toll Free No.: 1800 200 0040

© 2010, Chicago Pneumatic. All rights reserved. All mentioned, product names, company names, trademarks and service marks are the properties of their respective owners. Our products are constantly being developed and improved. We thus reserve the right to modify product specifications without prior notice.



We value good service to ensure customer satisfaction!

For Chicago Pneumatic, it isn't just about products. We value our end-users' and distributors' **performance**, and do our ultimate best to make it easy to work with our **people** while providing reliable products with a **passion**.

- **Broad product portfolio** of robust compressors & accessories
- **Decades of experience & innovation**
- **100% committed** distributor partnership

At Chicago Pneumatic, it is our constant endeavor to provide you with the best equipment and service solutions. Our compressors are supported by a network of trained service technicians and dealers who provide complete service support and ensure spare parts availability. They are available for any technical consultation to optimize the performance of your equipment and ensure reliable operation. With a wide network spread across the country, we are never too far away, to help you solve your problems.



Define your needs, our broad offer does the rest

Continuing the innovation in product development Chicago Pneumatic is introducing new addition into the product family. With vast experience in rotary screw compressor, CPC / CPD / CPE new dimension with gear drive technology for energy efficient production. The gear driven transmission maximizes machine output for the given pressure and power.

CPC/CPD

- The standard in the industry
- Gear driven



Noise level	Silent: 73-75 dB(A)
Capacity	148-455 cfm
Power	40-100 hp
Pressure	7-13 bar

User benefits

- Industry leading performance.
- Compact solution
- Easy maintenance - one man job
- Highly reliable components
- User-friendly operation
- ES 4000 standard controller

CPE

- Maximum productivity
- Gear driven



Noise level	Silent: 75 dB(A)
Capacity	362-593 CFM
Power	100-120 hp
Pressure	7-13 bar

User benefits

- Industry leading performance
- Reduced energy consumption for optimum output
- High product efficiency
- Cost savings on maintenance and energy consumption
- ES 4000 standard controller

CPVS

- Top value through energy efficiency
- Inverter driven



Noise level	Silent: 73-75 dB(A)
Capacity	82-505 CFM
Power	40-100 hp
Pressure	5-13 bar

User benefits

- Save electricity over 30%
- Optimal efficiency perfectly matching the air flow
- Quick return on investment
- ES 4000 advanced controller
- Environment friendly - reduced CO₂ emissions.

Gear driven Compressors

Maximize productivity with reliable compressed air solutions.

Chicago Pneumatic's gear driven range of oil-injected screw compressors is the true standard in the industry. The components have been carefully selected to assure optimal quality and reliability. While the footprint is reduced due to the smart transmission system and component arrangement, performance is guaranteed thanks to the in-house designed air end.

Highest reliability

- Eliminating transmission losses & optimizing running cost
- Reduced bearing loads resulting in longer lifetime & extended service intervals

Robust design

- Designed for 46°C ambient temperature
- High quality components ensures maximum longevity in operating conditions

Serviceability

- Easy access to every service points



Component overview



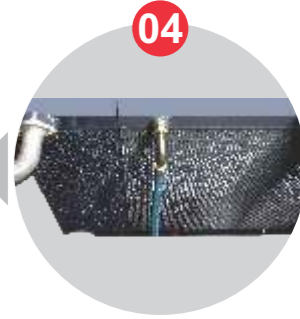
01 Air end
In house designed air end, unique 4/6 screw profile for premium performance



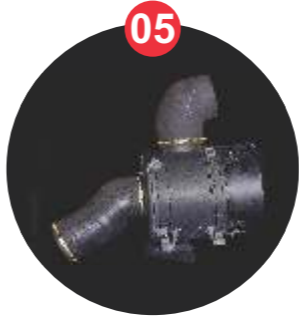
02 Motor
High efficiency motor designed to suit Indian conditions



03 Smart controller
Advance control system with user friendly interface



04 Coolers
Optimized cooler design to ensure lower operating temperature



05 Air inlet filter
High efficient paper filter for improved efficiency



06 Air/oil separator
Vertical air / oil vessel for 3 stage filtration & optimized operating temperature, ensuring minimum oil carry over <3ppm



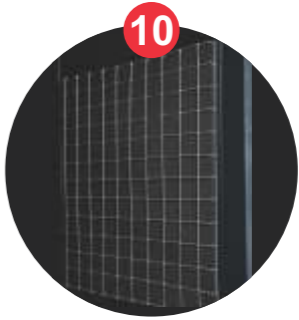
07 Cooling fan
Low RPM cooling fan for minimum operating cost and quiet operation



08 Control panel
Reputed make electrical components ensuring safety and optimal efficiency and reliability built in inverter

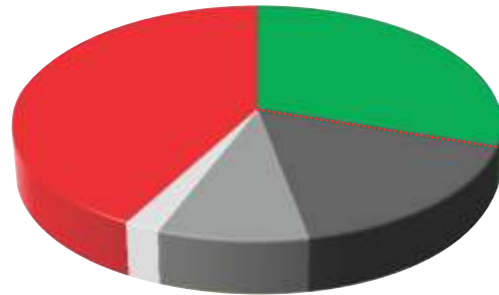


09 Unloader
vacuum unloader with less wear and tear, maintenance for tough operating conditions

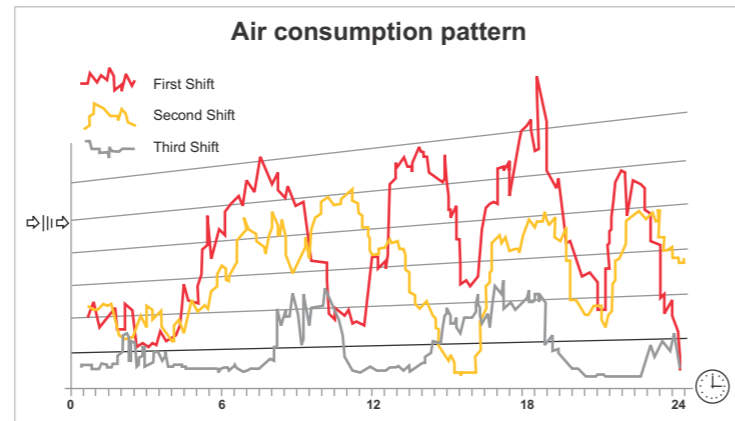
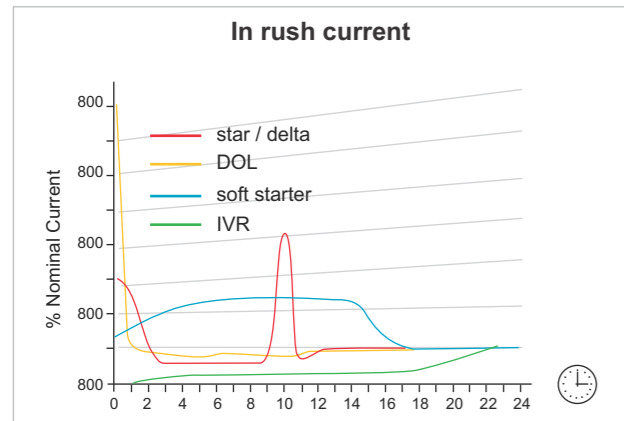


10 Filtration baffle
Highly efficient filtration baffle to protect dust entry

Inverter Driven Compressors to protect your efficiency

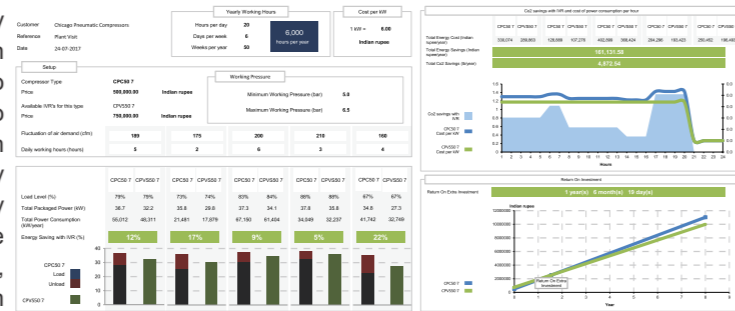


- 2% - Installation
- 9% - Maintenance
- 17% - Investment
- 30% - Savings
- 42% - Energy Consumption

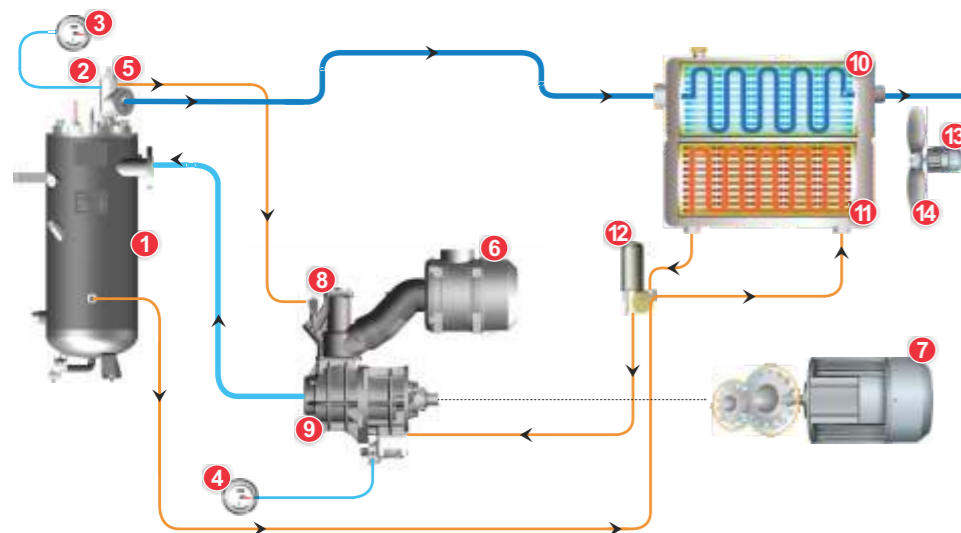


Energy Audit:

A frequency driven compressor potentially offers a very energy efficient compressed air installation, with a return on investment of typically 1-2 years. To help you decide to go with a frequency driven compressor or not, Chicago Pneumatic has created the Energy Cutter, a tool which calculates in an easy way and visually presents the yearly savings that can be obtained from investing in a frequency driven compressor for any specific industry. Besides the Energy Cutter tool, Chicago Pneumatic offers energy audits, specialized advice to make sure you make the right decision when buying your compressor.



Flow diagram



- 1 Air / Oil separator filter
- 2 Safety valve
- 3 Pressure gauge
- 4 Temperature switch
- 5 Minimum pressure valve
- 6 Air Filter (Air in)
- 7 Main Motor
- 8 Unloader
- 9 Screw element
- 10 After Cooler
- 11 Oil cooler
- 12 Thermostatic valve
- 13 Fan motor
- 14 Fan

Reliable compressed air solution for varying load demands.

The variable speed compressor series allows you to find the perfect match between air demand and air supply. Thanks to the inverter driven technology, the energy cost can be reduced upto 30%. Due to the robust design of the gear driven transmission, you can rely on high quality compressed air in the most demanding applications.

Components are carefully selected assuring quality and reliability. Moreover, installation and maintenance is kept simple thanks to the easy accessibility. Last but not least, cooling performance is guaranteed by the oversized cooler package. A high efficiency cooling fan is designed to deliver a high cooling flow at low noise level.

We protect your efficiency

Energy costs represent about 70% of the total operating cost of your compressor over a 5 year period. That's why reducing the operating cost of a compressed air solution is a major focus. Variable frequency driven compressors can cut the energy bill of your compressor by up to 30%.



Lower running cost

Only uses energy for air production; no wastage of energy on partial unload



Electromagnetic compatibility

No interference to near by equipments



Frequency converter

Built in frequency converter to perfectly match the varying air demand and supply



Smart controller

Advanced controller with fully loaded features



Pressure band

Regulates pressure within 0.1 bar



No unloading power

Eliminates unloading power to almost 0% ensuring energy savings



Constant power factor

Machine maintains high power factor even with reduced loads



Profitable investment

Saves upto 30% power ensuring early payback and (long run power saving)



Environment friendly

Reduced carbon-di-oxide emissions in turn saving environment



Silent running

Very low noise level ensuring machine can be kept close to the point of use



100% factory tested

Factory tested machines at critical speed to minimize vibration / resonance risk



Soft startup

Ensures no current peaks extending life of parts



Smart controller

Next generation controllers for easy access.

Advanced new generation controller with latest features to suit all your needs. Chicago Pneumatic offers range of control and monitoring systems for all compressed air products. The next generation ES 4000 standard and advance controller system offers a great variety of control & monitoring features that allow you to increase your compressor's efficiency and reliability.

To maximize energy efficiency the controller has following features:

- Latest icon based controller
- Ideal for load / unload compressors
- Improved controller algorithm
- Continuous pressure follow up algorithm
- Auto restart after voltage failure
- Always restart (when activated)
- Loaded with communication ports
- Ethernet connection
- CAN connection
- I/O expansion connection

Dual pressure band

Multiple pressure bands can be switched using either of the following:

- Manually
- By timer
- By external DCS systems

By reducing the system pressure energy is instantly saved, a drop of 1 bar or 14.5 psi saves a total of 7% when leakage losses are taken into account.



Optional DCS connectivity



Connect & monitor the compressor from your control centre. Inbuilt RS 485 port facilitates DCS connectivity to your control centre.



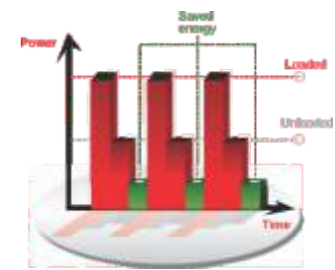
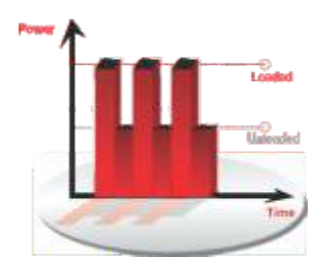
Online Monitoring

Monitor your compressor over ethernet with the new controller. Monitoring features include warning indication, compressor shutdown & many more...



Delayed Second Stop

- Most production processes create fluctuating levels of demand which, in turn, can create energy waste in low use periods.
- New Controller is more efficient - it keeps track of the time since the last stop occurred (Intelligent Unload Cycles)
- The result is that the machine can simply stop rather than unload, eliminating several minutes of unloaded running.
- Controller unloads rather than stops the machine if the pressure is dropping fast.
- Controller can predict the time until the minimum pressure limit is reached once the machine has stopped.
- Compressor restarts soon enough to ensure that the system pressure never drops below the desired minimum.



Optional Multiple compressor control

Can synchronize upto 6 compressors including other brands under a simple license. Inverter driven compressors can either be a master or slave.

- Control different compressors over CAN network
- 4/6 compressors sequencer – with the use of simple licence
- All Competitors machines over Can-Box
- Built-in sequencer for 4 (1 IVR) or 6 compressors (IVR)



Eliminate water, oil & dirt from your air system for efficient productivity



Today, process equipments are extremely sophisticated which require compressed air free from impurities like moisture, oil, dust etc.

Thanks to the reliable and efficient quality air solution products from Chicago Pneumatic customers are rest assured about the quality of air delivered at the point of application.

Online filters

Reliable filtration for superior system protection from dirt, oil and moisture.

G Series: Pre filter with micron rating 0.1, maximum oil carry over 0.1 mg/m³

C Series: After filter with micron rating 0.01, maximum oil carry over 0.008 mg/m³

V Series: Carbon activated filter with micron rating 0.005



CPX dryers (Refrigerated)

Environment friendly, quality dry air from refrigerated dryers for cost effective compressed air system. CPX range of dryers assures constant PDP of +3° at full load.

Technical Specification

Powerful, compact and easy to maintain

Model	HP	Pressure (BAR G)				CFM				dB(A)	End Connection	Weight (KG)
CPC 40	40	7	8.5	10	13	204	187	170	148	73	1 1/2"	865
CPC 50	50					240	223	206	170			865
CPC 60	60					290	265	248	214			895



CPC | FM | 1680 X 955 X 1505



CPD | FM | 1850 X 1060 X 1635

Reliable top performer

Model	HP	Pressure (BAR G)				CFM				dB(A)	End Connection	Weight (KG)
CPD 75	75	7	8.5	10	13	350	329	305	265	71	2"	1165
CPD 100	100					455	437	392	345			74

Maximise your productivity

Model	HP	Pressure (BAR G)			CFM			dB(A)	End Connection	Weight (KG)
CPE 100	100	7	10	13	517	429	362	73	2"	1640
CPE 120	120	7	10	13	593	498	423	74		



CPE | FM | 2210 X 1060 X 1595

Model	Pressure (BAR G)	CFM @ 5 Bar		CFM @ 7 Bar		CFM @ 10 Bar		CFM @ 13 Bar		dB(A)	End Connection	Weight (KG)	L	W	H
		Min	Max	Min	Max	Min	Max	Min	Max				MM		
CPVS 40	10	83	200	82	199	82	181	81	165	73	1 1/2"	885	1680	955	1505
	13	-	-	68	167	68	167	67	144			885	1680	955	1505
CPVS 50	10	102	239	101	238	101	221	101	201			905	1680	955	1505
	13	-	-	84	208	83	197	82	165			905	1680	955	1505
CPVS 60	10	123	283	122	288	122	266	122	237			935	1680	955	1505
	13	-	-	104	244	103	231	102	208			935	1680	955	1505
CPVS 75	10	145	351	145	350	144	328	144	297	1230	1850	1060	1635		
	13	-	-	124	307	121	266	121	255	1230	1850	1060	1635		
CPVS 100	7	190	508	187	505	-	-	-	-	75	2"	1640	2210	1060	1595
	10	163	444	161	442	160	440	-	-			1640	2210	1060	1595
	13	-	-	133	375	130	372	126	368			1640	2210	1060	1595

